



PEMERINTAH PROPINSI JAWA TENGAH

DINAS PENDIDIKAN

Jalan Pemuda 134 Semarang 50132 Telp. (024) 3515301 Faximile : (024) 3520071

**ACHIEVEMENT OF EXAMINATION OF THE
SECOND SEMESTER
ACADEMIC YEAR 2011/ 2012**

Package A

Subject	: English
Grade/ Semester	: IX / 2
Day / Date	:May, 2012
Time	: 08.00 – 10.00 WIB

GENERAL INSTRUCTION

1. Write your *name*, *class* and *student number* on the top right side in the available column of the answer sheet.
2. Check and read the test items carefully before you answer them.
3. Report to the observer, if there is/are unclear typing, damage or incomplete test item(s).
4. It is not permitted to use dictionary, cell phone, or other facilities!
5. The way to answer the test:
 - a. For the multiple choice items, cross the correct answer (X) in your answer sheet.
If you want to change your answer, revise the wrong answer by drawing two horizontal lines, then cross the correct one.

Example: Former answer d : a b c ~~d~~

Correct answer b : a b ~~c~~ ~~d~~

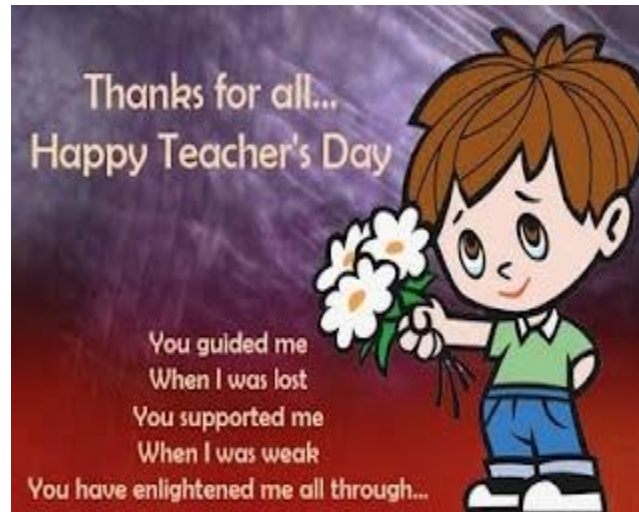
- b. For the essay test items, do them at the available space.
6. Recheck your answer carefully before you submit it to the observer.

The following text is for questions 1.

**PLEASE SCAN YOUR ROOM KEYCARD
TO ACTIVATE YOUR ROOM FLOOR
ACCESS SYSTEM**

1. The text means that to access your room floor you have to
 - A. activate your room keycard to the guard.
 - B. scan your room keycard on the access system
 - C. Insert the room keycard into the key hole at the door
 - D. place your room keycard on the keycard reading device in your room.

The text is for questions 2 and 3.




2. What is the purpose of the text?
 - A. to declare love to our beloved teachers.
 - B. to invite someone on Teachers Day celebration.
 - C. to greet the teachers a good wishing to on the Teachers Day.
 - D. to guide and support the teachers to celebrate the Teachers Day.
3. “You have enlighten me all through ...”
The underlined word has similar meaning to ...
 - A. explained
 - B. supported
 - C. weakened
 - D. guided


The following text is for questions 4 to 6.

SALAMUN ALAYKUM WA RAHMATULLAHI WA BARAKATAHU

JAFRIA ISLAMIC SCHOOL



First Day of School



This is a reminder to that the first day of school for the Jafria Islamic School located at 1249 Quarry Lane, Suite #150, Pleasanton is on Sunday, Sep 2nd, 2012

Please plan to attend the mandatory Parents Meeting from 11:40AM - 12:20PM. We will have an early release at 1:30PM on the first day.

Schedule

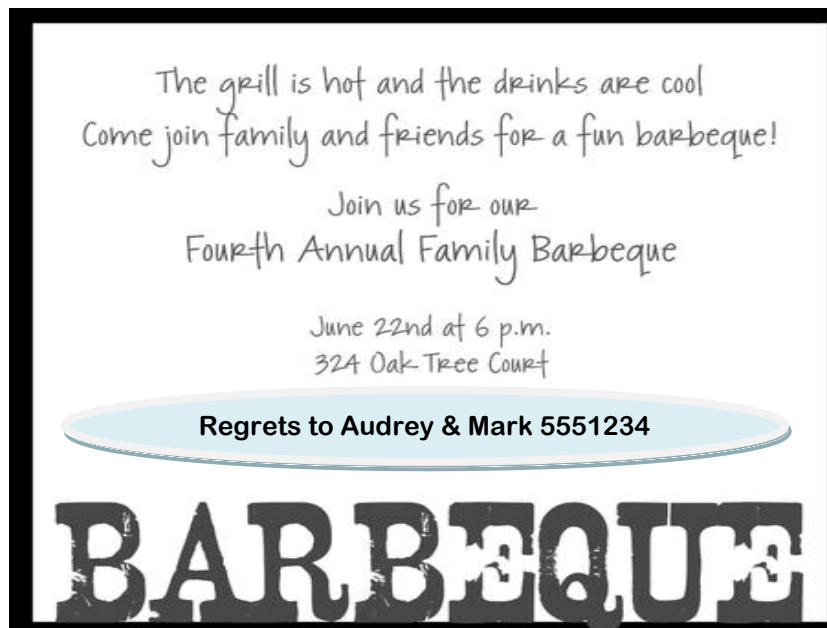
10:30 AM	Registration/Books and student evaluation
10:50 AM	Assembly - Information about the new school year Br. Jafar Mohsin & Br. Abbas Moloo
11:40 AM	Students go to regular classes
11:40 - 12:20	Parents Meeting
1:30 AM	Early release

4. Who probably announces the first day of school?
 - A. The students' parents.
 - B. The students of Jafra Islamic school.
 - C. The principal of Jafra Islamic School.
 - D. Br. Jafar Mohsin and Br. Abbas Moloo.

5. What is the purpose of the text?
 - A. Asking students to register the assembly.
 - B. Inviting students to join the parents meeting.
 - C. Announcing to students that they can go home earlier.
 - D. Informing the first day of school and the parents meeting.

6. Please plan to attend the **mandatory** Parents Meeting ...
The synonym of the underlined word is ...
 - A. compulsory
 - B. optional
 - C. annual
 - D. routine

The following text is for questions 7 to 9.



7. What is the purpose of the text?
- A. To regret to Audrey and Mark..
 - B. To tell us about the grill and the drink.
 - C. To celebrate the Fourth Annual Family Barbeque.
 - D. To invite someone to come to join the Fourth Annual Family Barbeque.
8. Join us for Fourth Annual Family Barbeque.
The underlined word means
- A. A group of people doing something together
 - B. A group of people coming together for a purpose
 - C. A party held outdoor at which meat cooked over a charcoal fire
 - D. Elaborate meal usually for special event, at which speeches are made
9. What should we do if we cannot come? We should
- A. Go to 324 Oak Tree Court
 - B. Grill the meat and drink cold
 - C. Call or contact Audrey and Mark
 - D. Send a permission letter to Audrey and Mark

The text is for questions 10 to 12.

How To Edit Photo Using Toycamera Analogcolor

Steps:

1. Make sure you have Toycamera Analogcolor program in your computer. If you don't have it, you can download and install it to your computer
2. Click the icon of Toycamera Analogcolor program on your desktop to open it
3. Load the photo you want to edit
4. Select the photo you want to edit and open it on Toycamera Analogcolor
5. After that, choose Preset button to edit your photo automatically or you can edit it by yourself manually.
6. You can also add signature/text, resize it, and choose the type of file you want to save
7. Then, save it. It will be saved automatically in the same folder with the previous photo.

10. If you don't have Toy camera Analog color program, you can download and it to your computer.
- A. install
 - B. select
 - C. edit
 - D. click
11. From the text we can conclude that ...
- A. after editing the photo we have to save it
 - B. we can't add a text or signature on the photo
 - C. toy camera analog color program is a modern camera
 - D. choose the preset button if we want to edit photo manually
12. It will be saved automatically in the same folder ...
The underlined word refers to ...
- A. photo
 - B. edited photo
 - C. signature
 - D. file

The following text is for questions 13 to 15

How does a caterpillar turn into a butterfly?

Actually the butterfly egg comes before the caterpillar. The adult butterfly lays eggs which hatch out in about 3-7 days. The young caterpillars start off eating and basically don't stop for 2-3 weeks. Once the caterpillars have grown big enough (usually about 2-3 weeks) they will be ready for their final molt that will reveal the chrysalis.

When the caterpillar is ready, it will find a place on a stem or branch and attach itself by spinning its own silk. Most caterpillars will hang upside down but a few will attach along side of a stem and use a silk sling to hold themselves in place. In about 1-2 weeks the adult butterfly will be ready to emerge.

The butterfly will push its way out of the chrysalis and cling to the chrysalis with its wings hanging down. After several hours the butterfly will be ready for its first flight. The caterpillar has now turned into a butterfly. The butterfly will mate and the female will lay eggs thus beginning the fascinating cycle once again.



13. How long will the adult butterfly be ready to emerge?
- A. 3 – 7 days.
 - B. 14 – 30 days.
 - C. 1 – 2 weeks.
 - D. 2 – 3 weeks.
14. What is the topic of the third paragraph?
- A. When the adult butterfly will be ready to emerge.
 - B. How the caterpillar metamorphoses.
 - C. Where the caterpillar makes its silk.
 - D. What the caterpillar comes from.

15. ..., **they** will be ready for their final molt that will reveal the chrysalis.(Par 1)
The word ‘they’ refers to
- A. butterflies
 - B. caterpillars**
 - C. chrysalis
 - D. eggs

The following text is for questions 16 to 19

A landslide or landslip is a geological phenomenon which includes a wide range of ground movement, such as rock falls, deep failure of slopes and shallow debris flows, which can occur in offshore, coastal and onshore environments. Although the action of gravity is the primary driving force for a landslide to occur, there are other contributing factors affecting the original slope stability. Typically, pre-conditional factors build up specific sub-surface conditions that make the area/slope prone to failure, whereas the actual landslide often requires a trigger before being released.

Landslides occur when the stability of a slope changes from a stable to an unstable condition. A change in the stability of a slope can be caused by a number of factors, acting together or alone. Natural causes of landslides include: groundwater (pore water) pressure acting to destabilize the slope, loss or absence of vertical vegetative structure, soil nutrients, and soil structure (e.g. after a wildfire), erosion of the toe of a slope by rivers or ocean waves, weakening of a slope through saturation by snowmelt, glaciers melting, or heavy rain, earthquakes, and volcanic eruptions

Landslides are aggravated by human activities such as : deforestation, cultivation and construction, which destabilize the already fragile slopes, vibrations from machinery or traffic, blasting, earthwork which alters the shape of a slope, or which imposes new loads on an existing slope.

There are some types of landslides: Debris Flow, earth flow, debris avalanche, Sturzstrom, and Shallow landslide in which the sliding surface is located within the soil mantle or weathered bedrock (typically to a depth from few decimetres to some metres).

16. The text mostly tells us about
- A. volcanic eruptions
 - B. groundwater
 - C. landslides**
 - D. rockfalls
17. Landslides occur when the stability of a slope changes from a stable to an unstable condition. (paragraph 2). The closest meaning of the underlined word is ...
- A. incline**
 - B. descent
 - C. debris
 - D. land
18. What is the main idea of the last paragraph?
- A. There are some types of landslides.**
 - B. Landslides are aggravated by human activities.
 - C. Landslides occur when the stability of a slope changes.
 - D. A landslide is a geological phenomenon which includes a wide range of ground movement.
19. What kinds of human activities can make the landslide worse?
- A. Snowmelt, glaciers melting, or heavy rain.
 - B. Deforestation, cultivation and construction.**
 - C. Groundwater, soil nutrient, and soil structure.
 - D. Rock falls, deep failure of slopes and shallow debris flows.

The following text is for questions 20 to 23

RAM: An accident occurred involving a motorcycle and a car at the junction of Jalan Mahkota and Jalan Simpang yesterday evening. The car was travelling along Klang, while the motorcycle was going the opposite direction. At the time of the accident, it was raining heavily and visibility was poor.

According to a police spokesman, a lorry, parked close to the junction had blocked the motorcyclist from seeing the car turning in from Jalan Simpang.

The impact of the collision caused the motorcyclist to fall from his machine. Fortunately, no other vehicles were on the road at that time. The motorcyclist suffered a broken arm and a broken leg. He was sent to the Tanjung Karang Hospital by a passing motorist. The driver of the car escaped with only minor injuries. Meanwhile, an eye witness said that the car did not stop at the junction before turning out.

20. What is the topic of the above text?
- A. **The road traffic accident**
 - B. The victim of road accident
 - C. The car travelling along Klang
 - D. The motorcyclist and the driver
21. The main idea of the third paragraph is
- A. It was raining hard when the accident happened
 - B. The accident involved a motorcyclist and a car driver
 - C. The motorcyclist suffered a broken arm and a broken leg
 - D. **The impact of the collision caused the motorcyclist to fall from his machine**
22. Who said that the car did not stop at the junction before turning out?
- A. The car driver
 - B. **An eye witness**
 - C. The motorcyclist
 - D. A passing motorist
23. The impact of the **collision** caused the motorcyclist to fall ...
The underlined word has the similar meaning to
- A. disaster
 - B. tragedy
 - C. attack
 - D. **crash**

The following text is for questions 24 to 26

Much of what we throw away could be used again. Recycling makes "garbage" to good use. Recycling helps preserve precious resources because it saves on the use of raw materials and energy. It also reduces the pollution when the waste is dumped.

Glass can be re-melted. This is better than making fresh glass from raw materials, but it is even better to reuse the bottle whole. Metals can be recycled by being re-melted and then used to make other new items. The metals to recycle from an ordinary household are aluminum and steel from cans. Scrap from cars gives several different metals from recycling.

Paper is easy to recycle. Every home and office should have a paper recycling routine. Plastics are the worst problem because they do not biodegrade (breakdown) easily. They are also hard to recycle and cause harmful pollution when burned. It is important to use as little plastics as possible, and then only ones that are recyclable or biodegradable.

Taken from: *Natural Resources, 1993*

24. What is the main idea of the first paragraph?
- A. Glass can be re-melted.
 - B. Recycling puts "garbage" to good use.
 - C. Recycling helps preserve precious resources.
 - D. Much of what we throw away could be used again.
25. How can metals be recycled?
- A. By scrapping.
 - B. By re-melting.
 - C. By burning.
 - D. By cutting.
26. They are also hard to recycle and cause harmful pollution when burned (par 3).
The word "they" refers to
- A. home
 - B. paper
 - C. office
 - D. plastics

The f

Unsalted

Item # 12122

Item UPC# 0 28558 12122 0



Nutrition Facts

Serving Size 1 oz (28g/about 17 chips)
Servings Per Container 8

Amount Per Serving	
Calories 140	Calories from Fat 60
% Daily Value*	
Total Fat 7g	11%
Saturated Fat 1g	5%
Trans Fat 0g	
Cholesterol 0mg	0%
Sodium 10mg	2%
Total Carbohydrate 17g	6%
Dietary Fiber 1g	4%
Sugars 0g	
Protein 2g	
Vitamin A 0%	Vitamin C 10%
Calcium 0%	Iron 2%

*Percent Daily are Based on a 2,000 calorie diet. Your daily values may be higher or lower depending on your calorie needs.

INGREDIENTS: Select Potatoes, Vegetable Oil (Contains one or more of the following: Canola, Peanut, and/or



27. Based on the text, which nutrition has the highest calories percentage in the potato chip?
- A. Fat
 - B. Fiber
 - C. Sodium
 - D. Carbohydrate
28. Which one of the following ingredient is not contained in the potato chip?
- A. Selected potatoes
 - B. Vegetable oil
 - C. Sodium
 - D. Salt
29. "Thin and Crispy" The underlined word means
- A. crunchy
 - B. yummy
 - C. chewy
 - D. salty

The following text is for question 30-32.



Timothy John "Tim" Berners-Lee, OM, KBE, FRS, FREng, FRSA, also known as "**TimBL**", was born in southwest London, England, on 8 June 1955, the son of Conway Berners-Lee and Mary Lee Woods. His parents worked on the first commercially built computer, the Ferranti Mark 1. One of four children, he attended Sheen Mount Primary School, and then went on to Emanuel School in London, from 1969 to 1973. He studied at The Queen's College, Oxford, from 1973 to 1976, where he received a first-class degree in Physics.

He is an English computer scientist, MIT (Massachusetts Institute of Technology) professor and the inventor of the World Wide Web. He made a proposal for an information management system in March 1989 and on 25 December 1990, with the help of Robert Cailliau and a young

student at CERN, he implemented the first successful communication between a Hypertext Transfer Protocol (HTTP) client and server via the Internet.

Berners-Lee is the director of the World Wide Web Consortium (W3C), which oversees the Web's continued development. He is also the founder of the World Wide Web Foundation, and is a senior researcher and holder of the 3Com Founders Chair at the MIT Computer Science and Artificial Intelligence Laboratory (CSAIL). He is a director of The Web Science Research Initiative (WSRI), and a member of the advisory board of the MIT Center for Collective Intelligence.

In 2004, Berners-Lee was knighted by Queen Elizabeth II for his pioneering work. In April 2009, he was elected a foreign associate of the United States National Academy of Sciences, based in Washington, D.C.

30. What is the main idea of paragraph two?
- A. TimBL is the inventor of Hypertext Transfer Protocol
 - B. TimBL made a proposal for an information management system.
 - C. TimBL is an English computer scientist, MIT professor and the inventor of the World Wide Web.
 - D. TimBL implemented the first successful communication between a HTTP client and server via the Internet.
31. Which is true based on the text above?
- A. Robert Cailliau implemented his first successful communication between a Hypertext Transfer Protocol (HTTP) client and server via the Internet.
 - B. In 2004, Berners-Lee was knighted by Queen Elizabeth II for his pioneering work and he was sent to Washington DC.
 - C. TimBL is an English computer scientist, MIT professor, the inventor of the World Wide Web and the owner of MIT Center for Collective Intelligence.
 - D. TimBL received his first-class degree in Physics at the age of twenty one years old.
32. Berners-Lee is the director of the World Wide Web Consortium (W3C), which oversees the Web's continued development. The underlined word means...
- A. Supervises
 - B. Organizes
 - C. Coordinates
 - D. Overcomes

The following text is for questions 33 - 35.

Last vacation, I went to Italy with Mom and Dad. We visited four cities: Rome, Bologna, Pisa, and Venice. Such beautiful cities they are. Their old buildings are well taken care of even though they are hundreds years old.

We took lots of pictures of those lovely places. But I was so impressed with the water city of Venice. Imagine, it's a city where ninety percents of its transportation use boats. Those water taxis are plying along the canals. So in Venice, almost all its streets are water.

My parents and I rode on a boat called gondola. We went around the city through the canals. We saw many beautiful places and buildings, such as Basilica in San Marco, churches, palaces, opera houses, universities, and famous bridges. One of the bridges was called the Bridge of Sighs. Funny, isn't it? I was so happy to have the chance to see it all.

(Adapted from Kumpulan Cerita MOMBI: Lei 's Learn English, edisi 22, Tahun 2007)

33. What's the text about?

- A. The activities done in Italy.
 - B. The writer's exciting vacation in Italy.**
 - C. The explanation of beautiful cities in Italy.
 - D. The description of some wonderful places in Italy.
34. Which city was the most unique according to the writer?
- A. Bologna.
 - B. Venice.**
 - C. Rome.
 - D. Pisa.
35. "But I was so **impressed** with the water city of Venice." (paragraph 2)
What does the underlined word mean?
- A. To feel relax and happy.
 - B. To have the pictures of beautiful things.
 - C. To feel happy to see somebody else's happiness.
 - D. To have the feeling of admiration of something.**

The following text is for questions 36-38.

Leaving London

Oh how I do not want to leave
The house where I was born.
My head is filled with many fears,
My heart in two is torn.

Good-bye my friends, good-bye my
home,
Good bye the things I know.
Forgive me for not being strong
But I don't want to go.

This life, they say is not a dream,
And this I have to learn,
That there must always be some rain,
And now it is my turn.

Their plans have put an end to me.
I never thought they could.
The money spent, my future bought,
If I could say, I would.

36. What's the poem about?
- A. planning to go somewhere.
 - B. feeling about leaving.**
 - C. missing hometown.
 - D. saying good bye.
37. Which paragraph expresses that the writer is going to a school in another country?
- A. 1
 - B. 2
 - C. 3
 - D. 4**
38. What does "that there must always be some rain" mean?
- A. We must have a dream and pursue it.
 - B. Life is always meaningful and interesting.

- C. Life is sometimes sad and can be difficult.
- D. There will be some rain and we must admit it .

The following text is for questions 39-41.

May 26, 2010

Dear Mitch,

I am really sorry for being immature these past few weeks. I'm sorry if I refuse to talk and see you. Some of our classmates told me that you were the one who spread the rumor about me cheating on our final exam. I was wrong for believing them rather than listening to you. I know you've been trying so hard to reach out to me but then I kept on pushing you away. I was mad. But when I realized that it wasn't you after all, I felt very guilty. I know it will be hard for you to trust me again. And I understand if it will take a long time for you to forget the things that happened.

I promise to make it all up to you. I don't want to lose a friend like you because you are one of the best that I have. And it was my biggest mistake to hurt you like that. I hope you can forgive me. Please tell me when you are ready to talk. I'd be more than willing to patch things up. I'll be waiting for your reply.

Sincerely,
Ben

39. What makes Ben so mad?
- A. The betrayal of his best friend.
 - B. The immaturity of his behavior.
 - C. The mistakes he made on final exam.
 - D. The rumor about his cheating on final exam.
40. Why did Ben write a letter to Mitch?
- A. To express his gratitude
 - B. To ask for apology
 - C. To show awareness
 - D. To get confession
41. Which is TRUE based on the text?
- A. Mitch spread the rumor that Ben cheated on the final exam.
 - B. Mitch didn't want to keep in touch with Ben
 - C. Ben expected Mitch to forgive him
 - D. Ben will never trust Mitch again

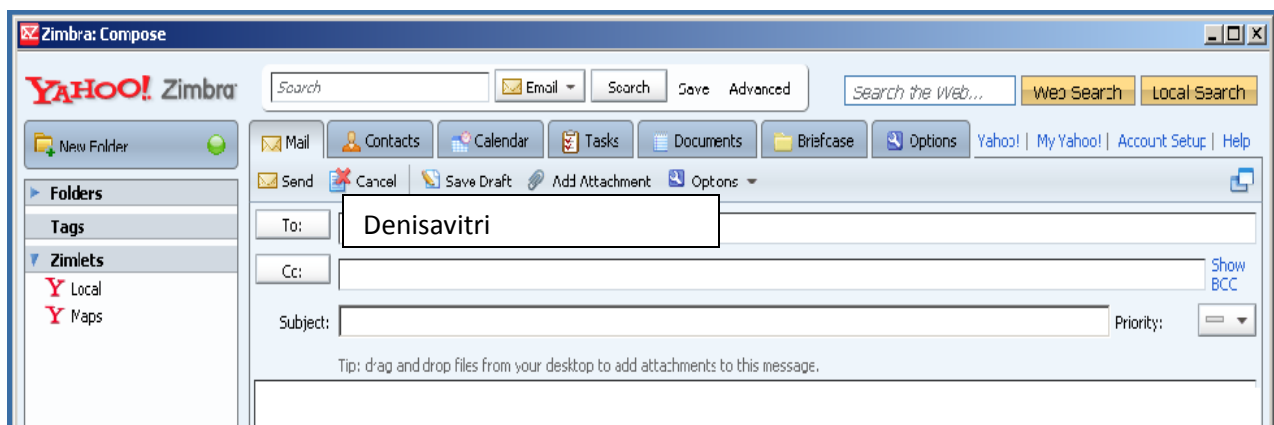
The following text is for questions 42-44.

World Class Study/London-EDUCATION EXHIBITION IN THAILAND



42. What's the purpose of the text above?
- A. To advertise education in London
 - B. To inform how to study in Thailand
 - C. To describe education particularly
 - D. To discover the benefits of studying
43. How can we register to join the event
- A. By visiting Grand Hyatt Erawan Hotel Bangkok (BTS Chitlom)
 - B. By visiting www.imperial.ac.uk/international/wcsil-thailand
 - C. By calling +44 (0)20 7539 5111
 - D. By registering at the college
44. You are **encouraged** to register in advance for this event.
What's the synonym of the underlined word?
- A. allowed
 - B. banned
 - C. needed
 - D. invited

The following text is for questions 45-47.



Dear Editor:

I've been hearing everywhere that there will be more bugs this year because of having no winter type weather. We had some snow and a couple whiteouts so far this winter. The sun has been shining a lot too.

I have seen some ticks, spiders, and mosquitoes inside and outside of the house. I was playing with my dog and found a huge tick on his neck. He also had one in between his eyes. I removed them with the heads on and put them in a ziplock bag. There are many ladybugs and Boxelder beetles still in my house from last year.

I was wondering if the bugs will be a problem the rest of 2012?

Jared Bennett

45. What's the text about?
- A. The excessive bugs.
 - B. The insect presence.
 - C. The weather change in 2012.
 - D. The problem the rest of 2012.
46. From the text we can infer that
- A. There is no winter this year
 - B. There is some snow and whiteouts
 - C. Bugs become big problem in the rest of 2012
 - D. Jared Bennett felt no worry about bugs presence
47. I removed them with the heads on ...
The underlined word means ...
- A. Took in
 - B. Took on
 - C. Took over
 - D. Took away

The following text is for questions 48-50.

Old man Ma lived a lonely life. His house was a cave at the edge of Black Bamboo forest. Ma's only friend was an old dog called Lau Ping which he loved very much. All the town people thought Ma was very old and poor. The truth was that he had a very big, well-kept secret.

He was in fact a rich young man in disguise. In his cave he stored much wealth acquired from his travels around the world. He wanted to leave the cave and stay in a place far, far away. Until then his wealth must remain a secret because he feared somebody might steal his precious belongings.

A young maiden named Snow Pea lived near him. She had a heart of gold and always wanted to help him. Alas, Ma was very ungrateful. He never thanked her but scolded her instead.

One day, Ma came back from his travel and found his dog missing. He was extremely upset and searched everywhere but he couldn't find it. Ma then sat down and wept bitterly. His heart was filled with despair as he realized that all his riches could not take the place of his beloved dog.

The next day, Ma was awakened by a familiar bark outside his cave. It was Lau Ping. Ma was so happy that he rushed out without putting on his disguise. When he realized this, it was too late as Snow Pea had seen him. She had brought Lau Ping home after rescuing it from a hole and nursed its broken paw back to health.

Ma didn't care that his secret had been revealed. He finally realized life was meaningless without friends. He decided to go out from his disguise and since then he lived a normal and much happier life.

48. What was Ma big secret? He was

- A. a wealthy youngman
- B. an old wanderer
- C. a poor oldman
- D. a rich oldman

49. Which is **not true** based on the text?

- A. Ma was so sad when he found his dog missing.
- B. Ma was afraid somebody would steal his riches.
- C. Ma realized that his dog could not be replaed by his wealth.
- D. Snow Pea rescued Lau Ping from a hole and nursed its broken legs.

50. What message can we get from the story above?

- A. Let sleeping dogs lie.
- B. It's never too late to mend.
- C. What you sow is what you reap.
- D. A friend in need is a friend indeed.

The following text is for questions 51 -53.

April 11, 2012

142 Peter St.
Birmingham, Texas 70382

Dear Mr. Burke,

I really need your help with this.

Your engineer Mr. Daniel called for the third time in the past ten days to repair our washing machine at the above address, and I am still without a working machine.

He 51. to carry out the repair once more because the spare part was again not 52. (I attach copies of the service visit reports.)

Your engineers have been excellent as always, but without the correct parts 53. ... can't do the job required.

Can I ask that you look into this to ensure that the next service visit, arranged for April 14, 2012, resolves the matter.

Please telephone me to let me know how you'd like to deal with this.

When the matter is resolved I'd be grateful for a suitable refund of some of my service contract costs. I greatly appreciate your help.

Yours sincerely

J Smith Mrs

51. A. Was unable
B. Was unbelievable
C. Was unacceptable
D. Was undependable

52. A. Capable
 B. **Compatible**
 C. Comfortable
 D. Combustible

53. A. I
 B. He
 C. We
 D. **They**

Read the following text for questions 54-56 and complete the missing words

A waterfall is a stream of water that drops 54. ... from a higher to a lower level. In large falls thousands of gallons pour down every second. Waterfalls usually form when rivers 55. ... over rock that is softer than the surrounding area. Soft rock wears away faster than the hard rock. This creates a ledge, over which the water pours. Waterfalls are also found where glaciers (river of ice) have dug valleys deeper than their tributaries or in places where a river channel was raised or lowered.

The amount of water going over a waterfall can vary enormously. If the 56 of water is small, it is called a cascade; if large, it is called a cataract.

54. A. rightly
 B. Slowly
 C. **Sharply**
 D. clearly

55. A. lay
 B. Set
 C. Get
 D. **Flow**

56. A. **Volume**
 B. Value
 C. Level
 D. rate

The following jumbled words are for question 57.

protective	use	with	eye wear	and	all chemical	apparel	handling
1	2	3	4	5	6	7	8

57. The best arrangement is
 A. 2-4-5-8-3-1-6-7
 B. 2-4-5-8-6-3-7-8
 C. **2-4-5-1-7-3-6-8**
 D. 2-4-5-6-8-3-7-1

The following jumbled sentences are for question 58.

- To produce speech sounds, the vocal tract must change shape.
- The puffs are heard as a buzz, but this buzz is still not speech.
- Like all sound production, speech production requires a source of energy.
- To become audible, the air stream must vibrate rapidly. The vocal cords cause the air stream to vibrate.

5. During speech, we continually alter the shape of the vocal track by moving the tongue and lips, etc.
 6. The source of energy for speech production is the steady stream of air that comes from the lungs as we exhale. When we breathe normally, the air stream is inaudible.
 7. As we talk, the vocal cords open and close rapidly, chopping up the steady air stream into a series of puffs.
 8. The movements change the acoustic properties of the vocal tract, which in turn produce the different sounds of speech.
58. The best arrangement
- A. 3 – 6 – 4 – 7 – 2 – 1 – 5 – 8
 - B. 3 – 6 – 4 – 1 – 7 – 2 – 5 – 8
 - C. 3 – 6 – 4 – 7 – 1 – 2 – 5 – 8
 - D. 3 – 6 – 4 – 1 – 2 – 7 – 5 – 8

The following jumbled words are for question 59.

disasters	man-made	diseases,	the result of	are	accidents,	usually	or	wars
1	2	3	4	5	6	7	8	9

59. The best arrangement is
- A. 2 – 1 – 7 – 5 – 4 – 6 – 3 – 8 – 9
 - B. 2 – 1 – 5 – 7 – 4 – 6 – 3 – 8 – 9
 - C. 2 – 3 – 4 – 5 – 6 – 1 – 7 – 8 – 9
 - D. 2 – 3 – 5 – 7 – 4 – 1 – 6 – 8 – 9

The following jumbled sentences are for question 60.

1. I ran as fast as a cheetah until I came to the clearing.
 2. I dug deeper at the frosty earth with my bare hands.
 3. Suddenly I felt something and took it. It was the ring.
 4. It was a cold winter's night when I went to Tumble Wood.
 5. I got down on my hands and knees and began to search for the ring.
 6. The full moon drifted in and out of the clouds, casting silvery light on the branches.
 7. My heart pounded like a drum and my knees, shook like jelly, but I couldn't turn back.
 8. I had to find the gold ring I lost at the picnic, the ring my grandma gave me before she passed away.
60. The best arrangement is
- A. 4 – 6 – 7 – 8 – 1 – 5 – 2 – 3
 - B. 4 – 6 – 7 – 8 – 2 – 1 – 5 – 3
 - C. 8 – 4 – 6 – 7 – 5 – 2 – 1 – 3
 - D. 8 – 4 – 7 – 1 – 4 – 5 – 2 – 3